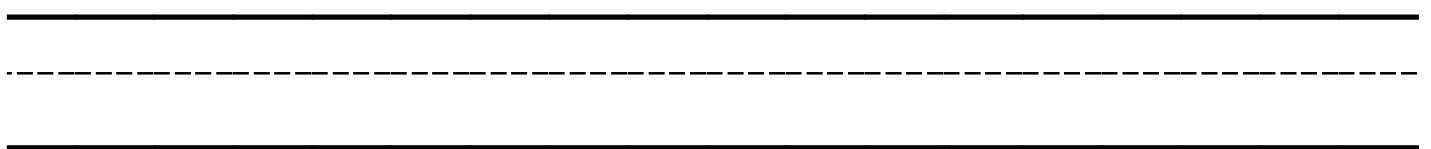
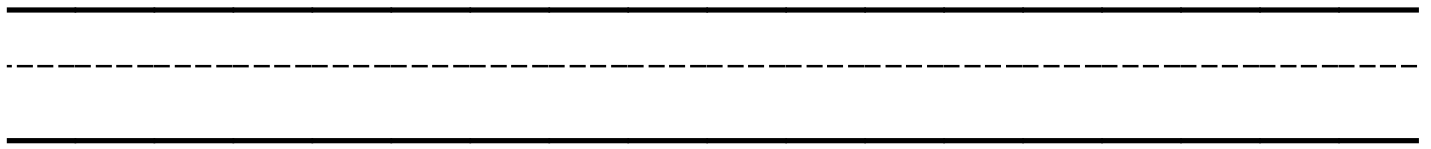
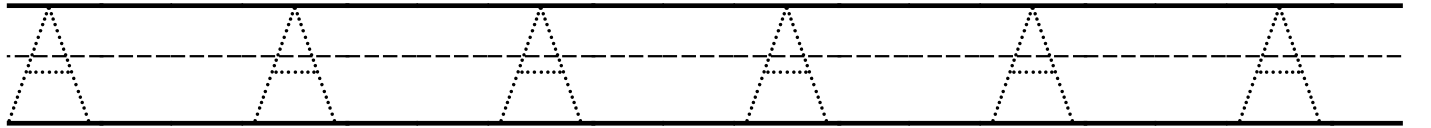
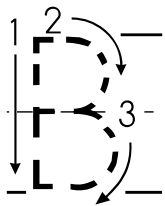
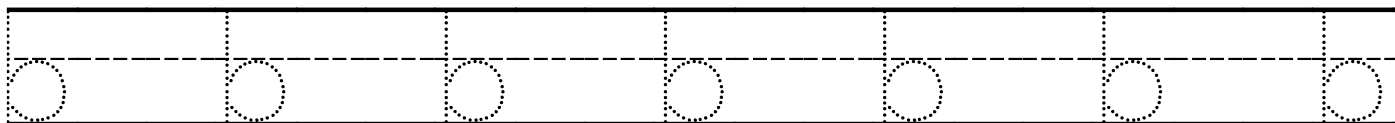
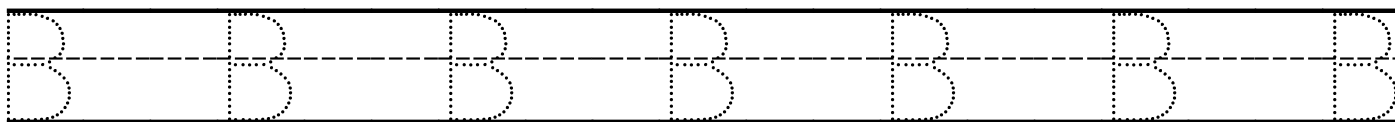
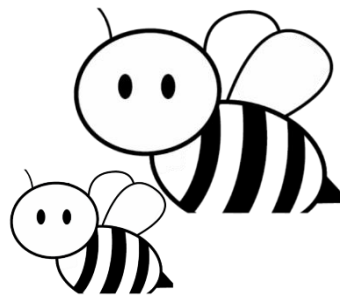


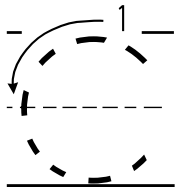
is for **Apple**



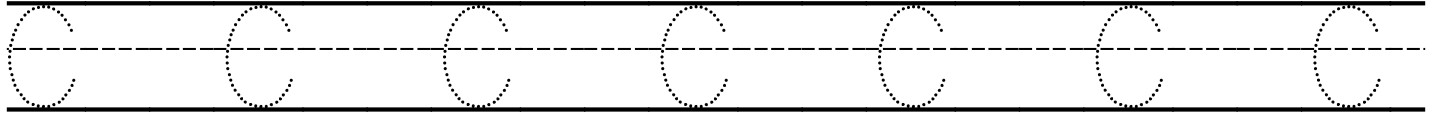
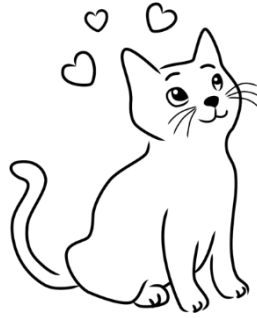


is for **Bees**





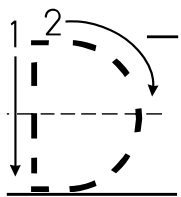
is for **Cat**



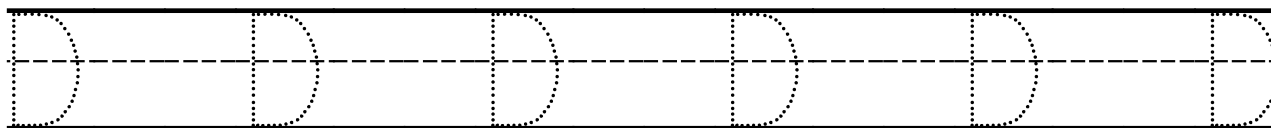
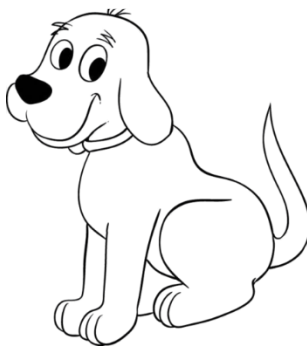
Blank handwriting practice lines consisting of three horizontal lines (top, middle dashed, bottom) for independent practice.



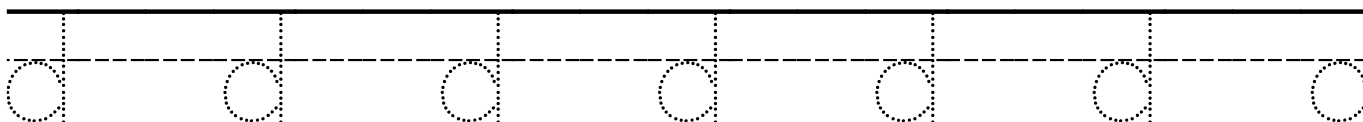
Blank handwriting practice lines consisting of three horizontal lines (top, middle dashed, bottom) for independent practice.



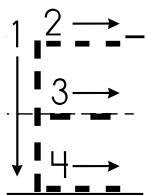
is for **Dog**



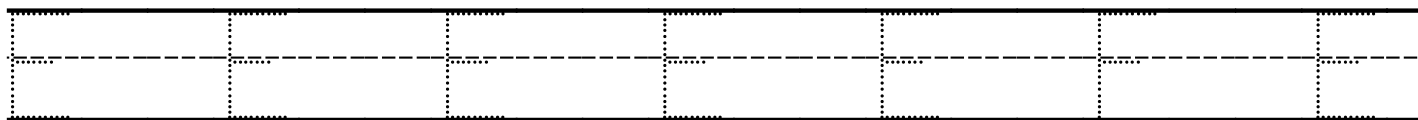
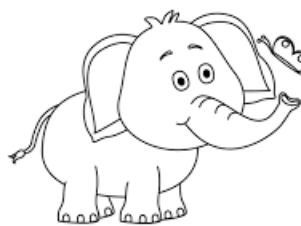
Two sets of empty three-line grids (top solid, middle dashed, bottom solid) for independent uppercase letter 'D' practice.



One set of empty three-line grids (top solid, middle dashed, bottom solid) for independent lowercase letter 'd' practice.



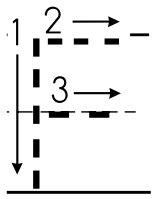
is for **Elephant**



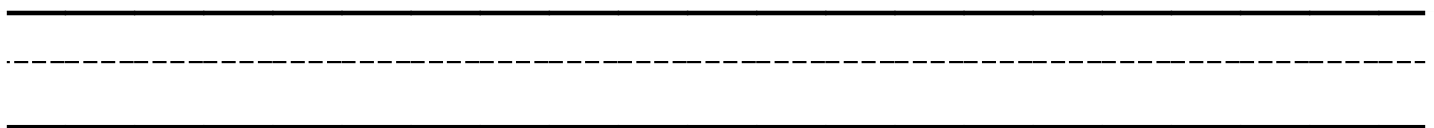
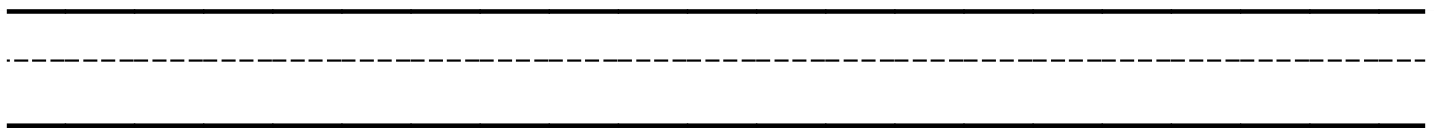
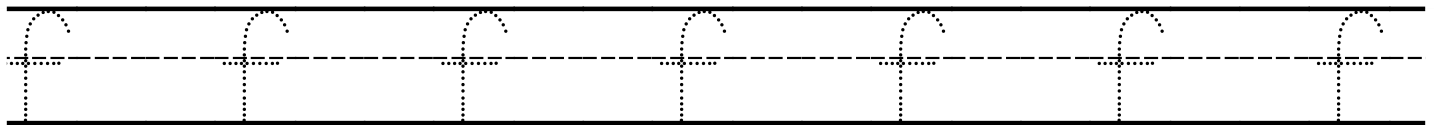
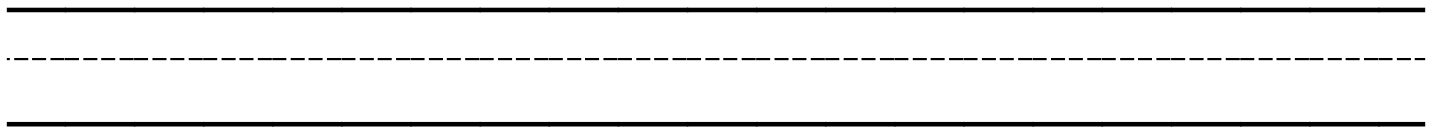
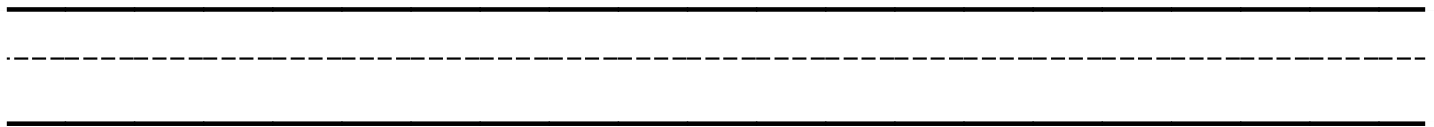
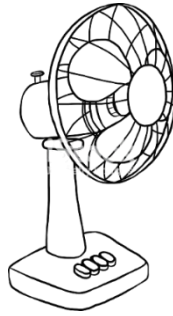
Two sets of blank handwriting practice lines, each consisting of a solid top line, a dashed middle line, and a solid bottom line.

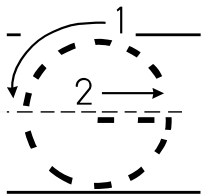


Two sets of blank handwriting practice lines, each consisting of a solid top line, a dashed middle line, and a solid bottom line.

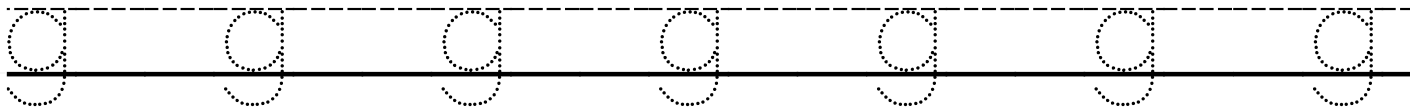
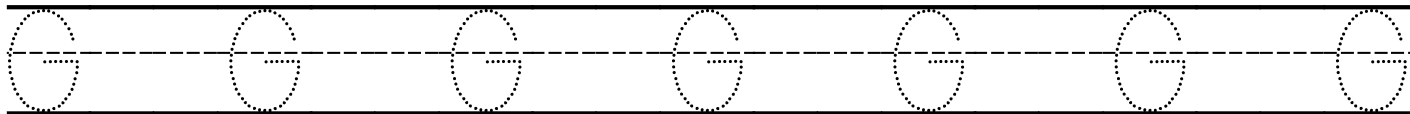
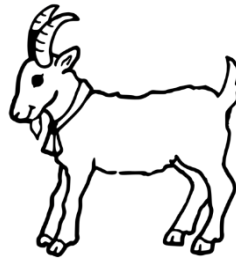


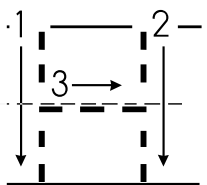
is for **Fan**



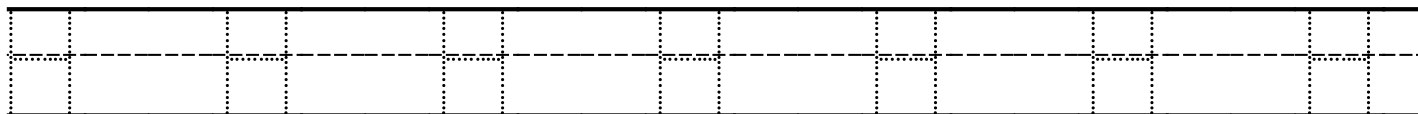


is for **Goat**

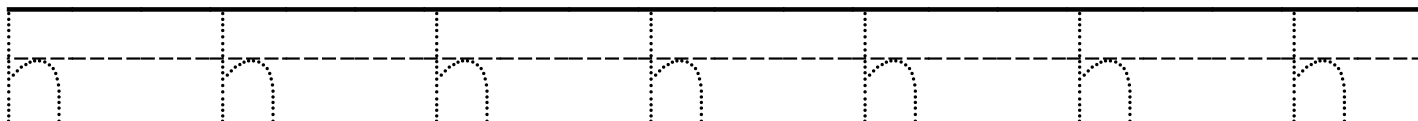




is for **House**



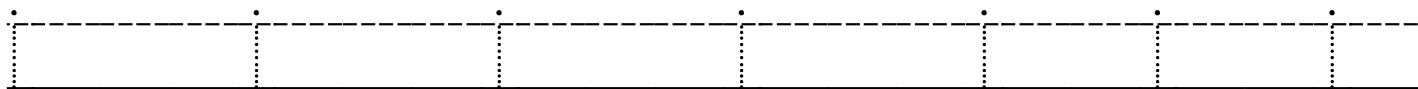
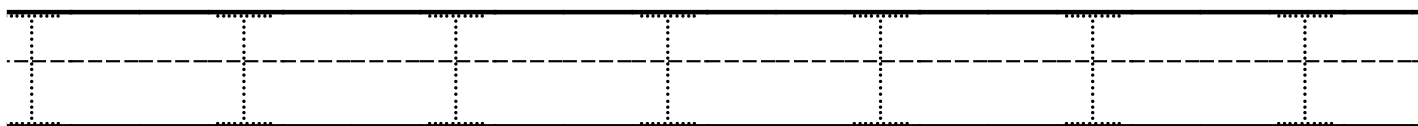
Two sets of blank handwriting practice lines. Each set consists of a solid top line, a dashed middle line, and a solid bottom line.

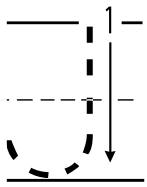


Two sets of blank handwriting practice lines. Each set consists of a solid top line, a dashed middle line, and a solid bottom line.



is for **Ink**

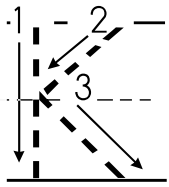




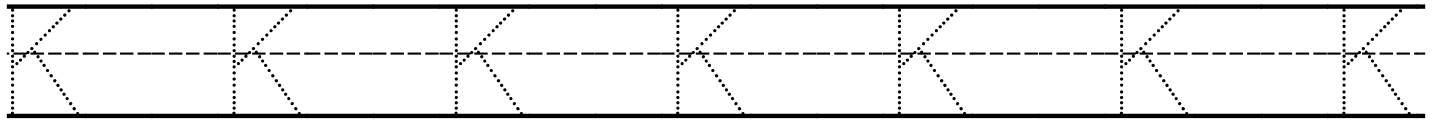
is for **Jug**

J J J J J J

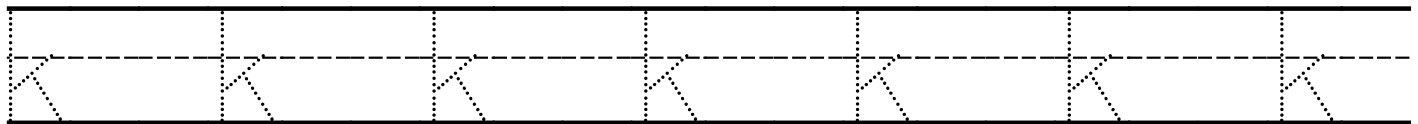
j j j j j j



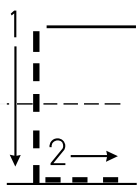
is for **Kite**



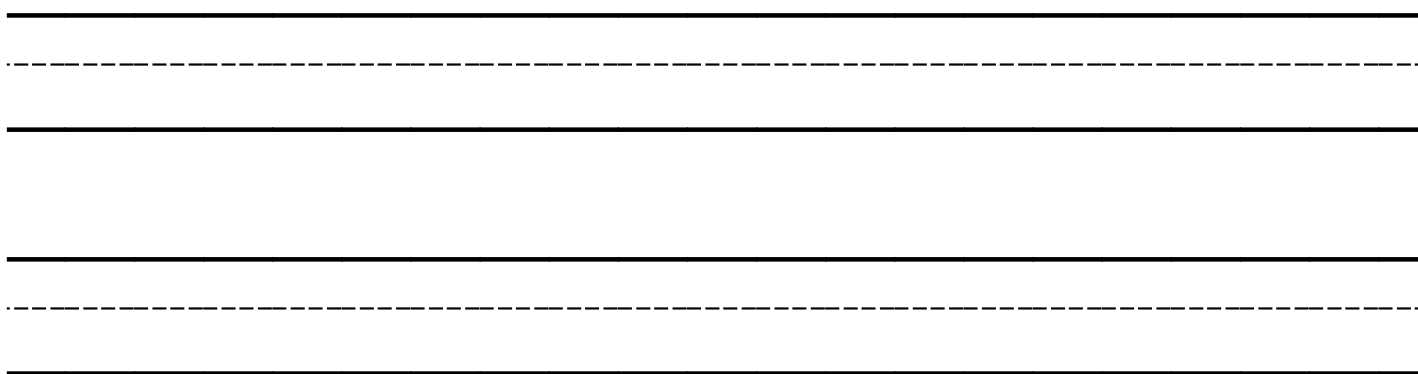
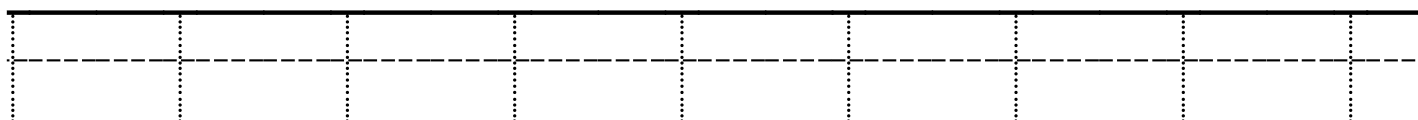
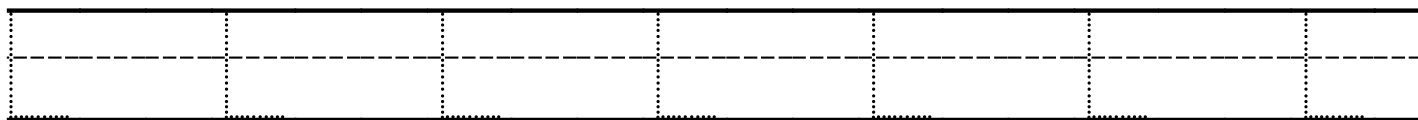
Two sets of empty handwriting lines for practice. Each set consists of a solid top line, a dashed middle line, and a solid bottom line.

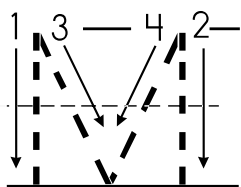


Two sets of empty handwriting lines for practice. Each set consists of a solid top line, a dashed middle line, and a solid bottom line.

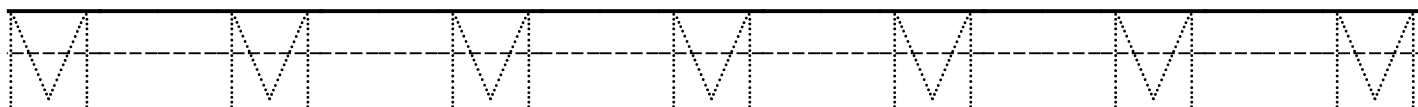


is for **Lemon**





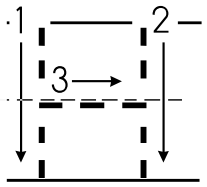
is for **Monkey**



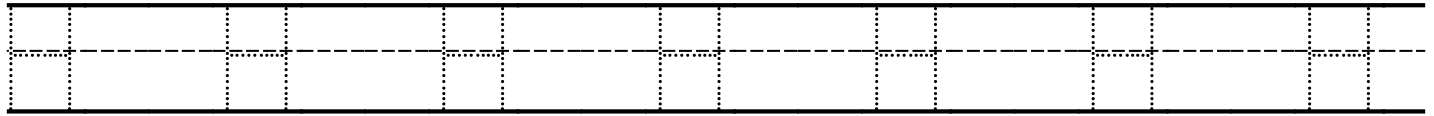
Three sets of empty three-line grids (top, middle dashed, bottom) for independent uppercase 'M' tracing practice.



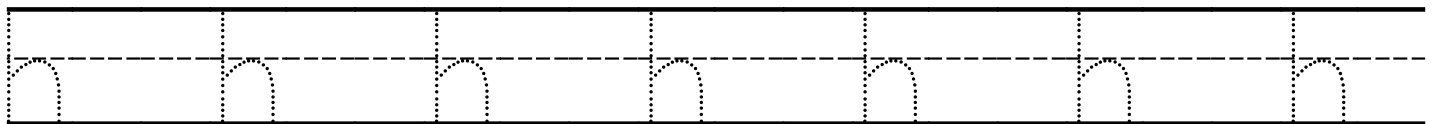
Three sets of empty three-line grids (top, middle dashed, bottom) for independent lowercase 'm' tracing practice.



is for **House**



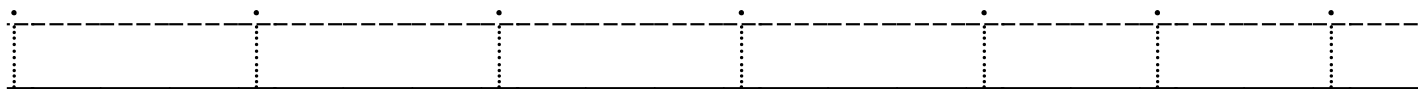
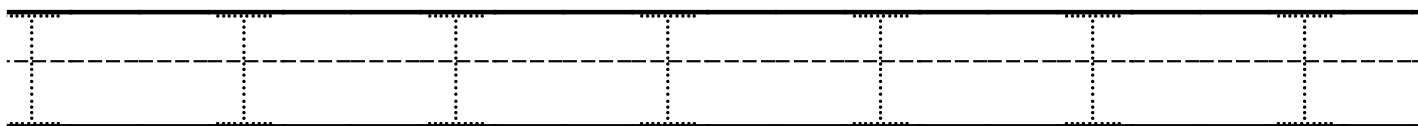
Two sets of blank handwriting practice lines. Each set consists of a solid top line, a dashed middle line, and a solid bottom line.

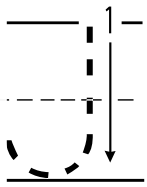


Two sets of blank handwriting practice lines. Each set consists of a solid top line, a dashed middle line, and a solid bottom line.



is for Ink

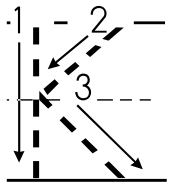




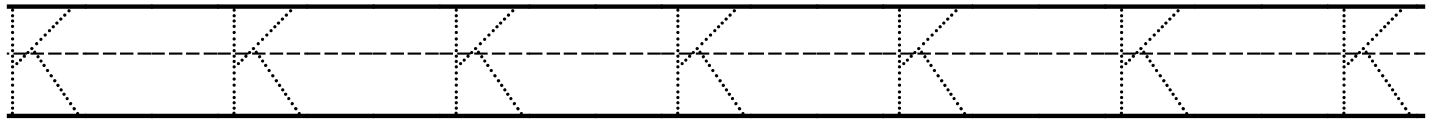
is for **Jug**

J J J J J J

j j j j j j



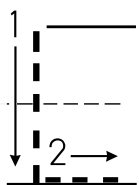
is for **Kite**



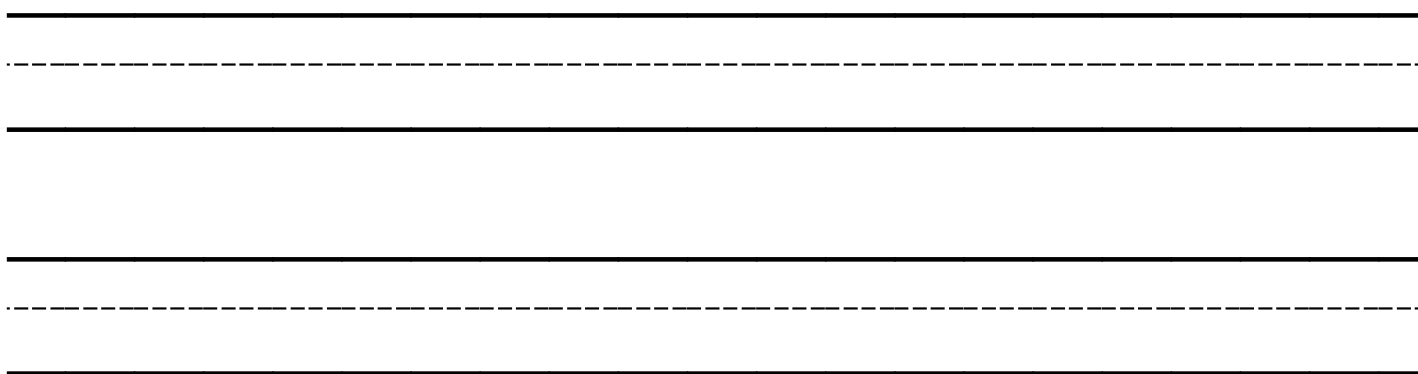
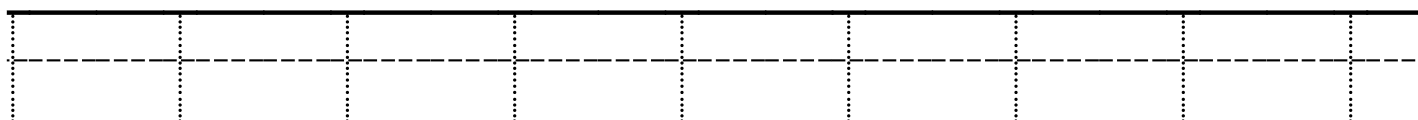
Two sets of empty three-line handwriting guides (top solid, middle dashed, bottom solid) for practicing the letter 'K'.

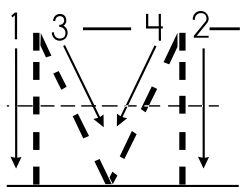


Two sets of empty three-line handwriting guides (top solid, middle dashed, bottom solid) for practicing the letter 'k'.

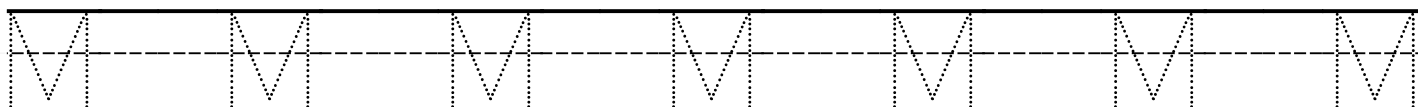


is for **Lemon**





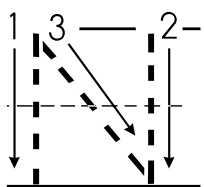
is for **Monkey**



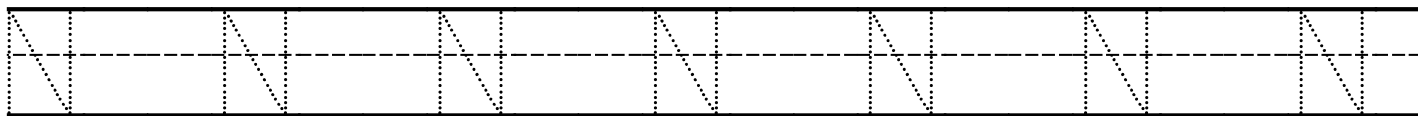
Three sets of empty three-line grids (top, middle dashed, bottom) for practicing writing uppercase letter M.



Three sets of empty three-line grids (top, middle dashed, bottom) for practicing writing lowercase letter m.



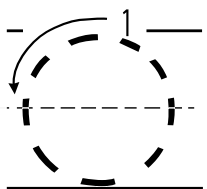
is for **Nest**



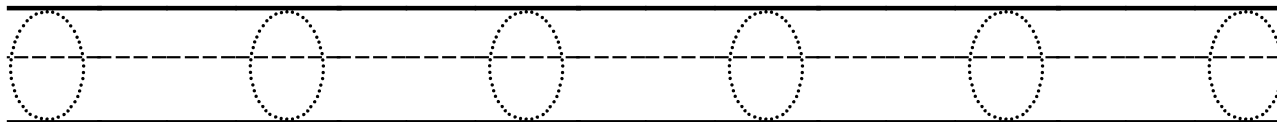
Three sets of empty handwriting lines (top solid, middle dashed, bottom solid) for practicing the uppercase letter 'N'.

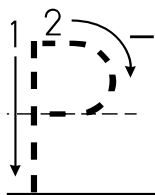


Three sets of empty handwriting lines (top solid, middle dashed, bottom solid) for practicing the lowercase letter 'n'.

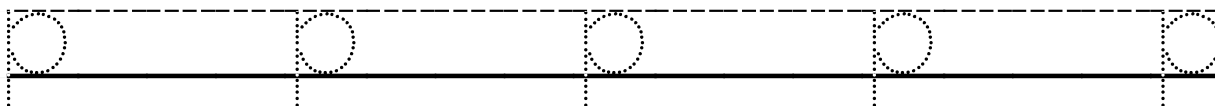
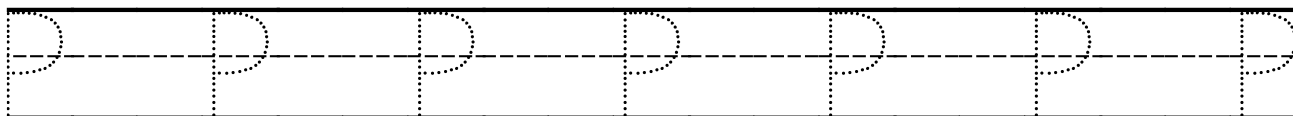


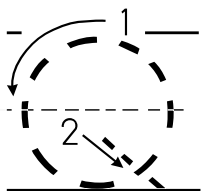
is for **Owl**



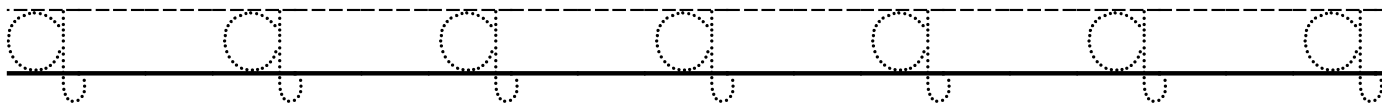
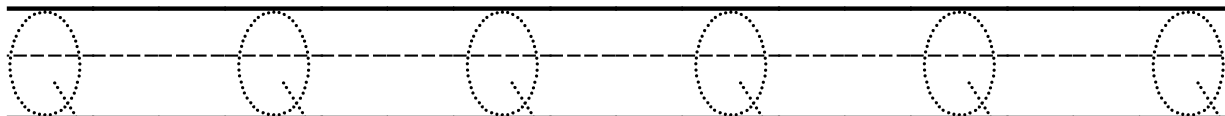


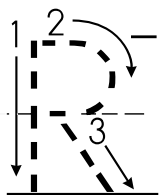
is for **Parrot**





is for **Queen**

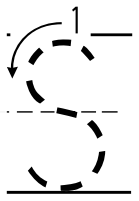




is for **Rat**

R R R R R R R

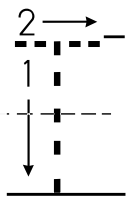
r r r r r r r



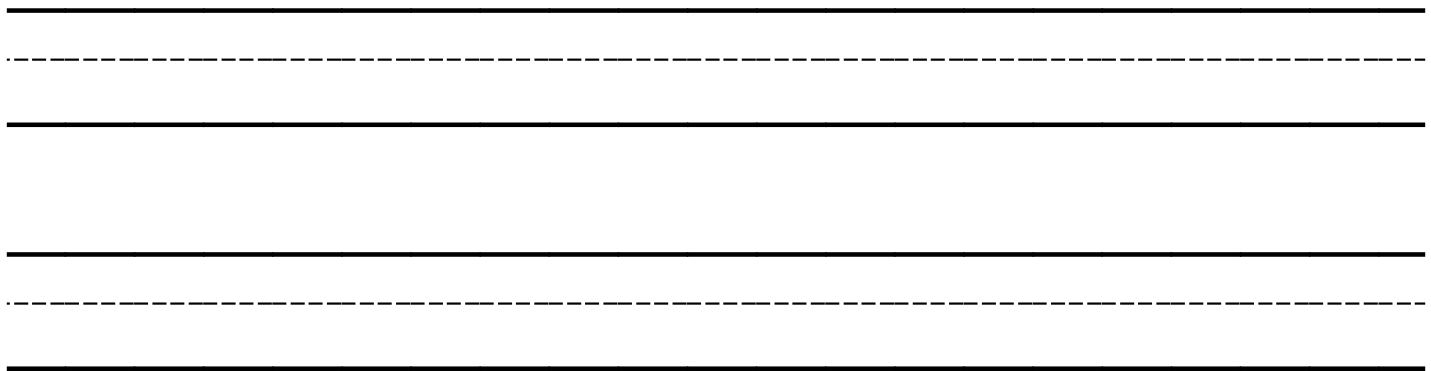
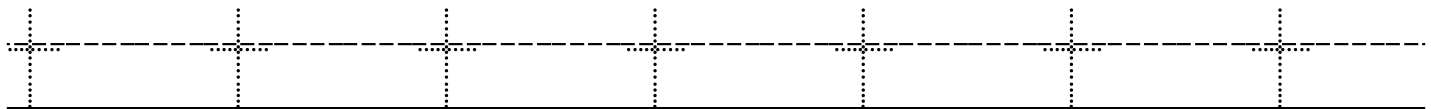
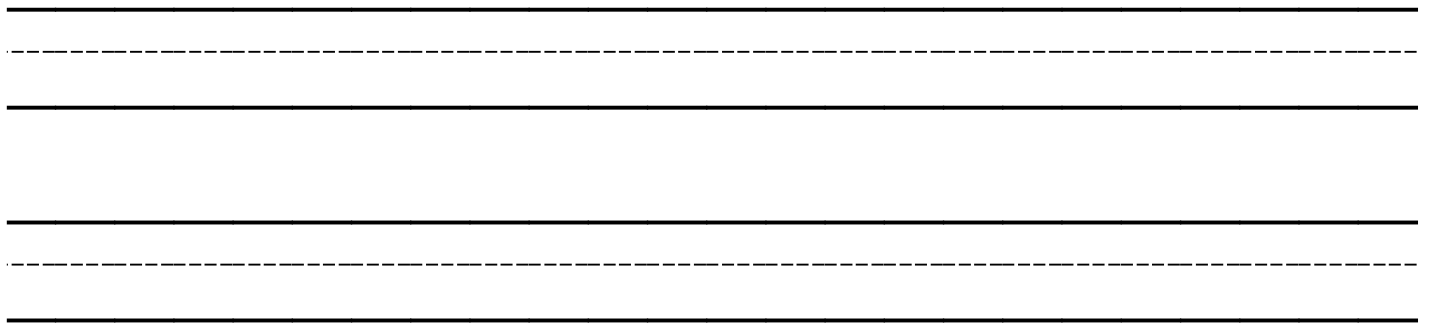
is for **Sun**

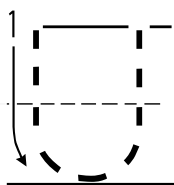
S S S S S S S S

S S S S S S S

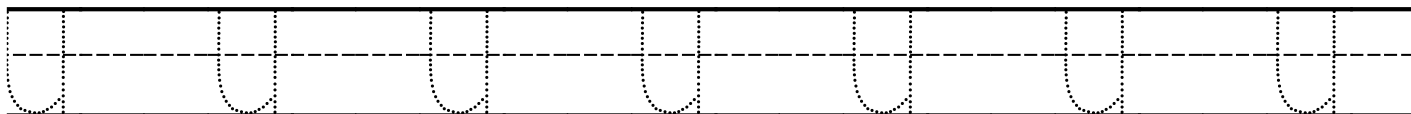


is for **Tree**





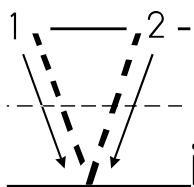
is for **Umbrella**



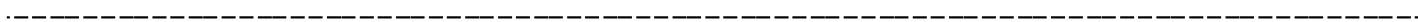
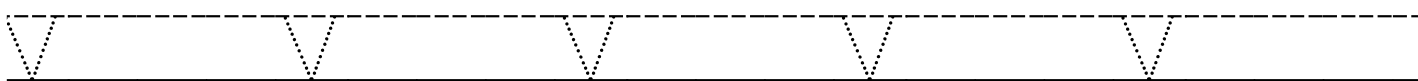
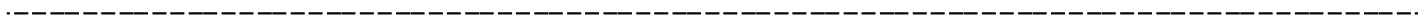
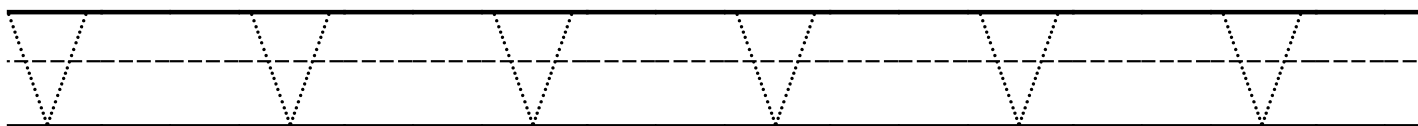
Three sets of empty handwriting lines for practice. Each set consists of a solid top line, a dashed middle line, and a solid bottom line.

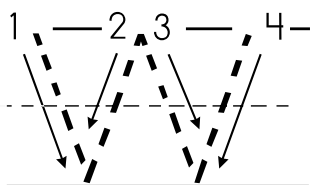


Three sets of empty handwriting lines for practice. Each set consists of a solid top line, a dashed middle line, and a solid bottom line.

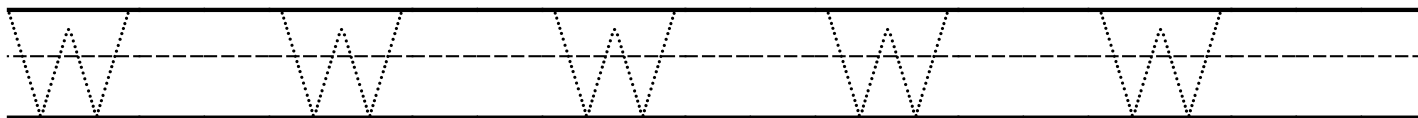


is for **Van**





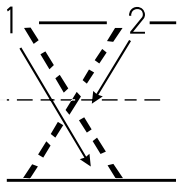
is for **Watch**



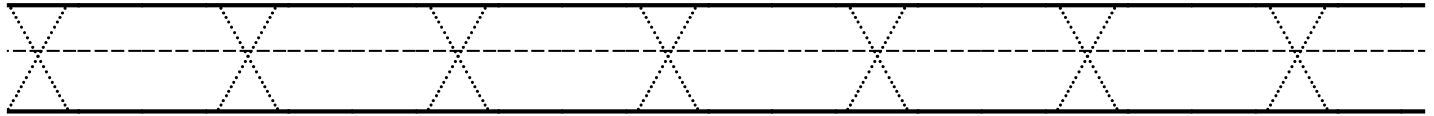
Two sets of empty three-line grids (top solid, middle dashed, bottom solid) for independent handwriting practice.



Two sets of empty three-line grids (top solid, middle dashed, bottom solid) for independent handwriting practice.



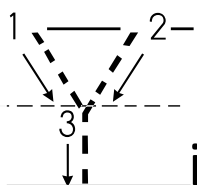
is for **X-ray**



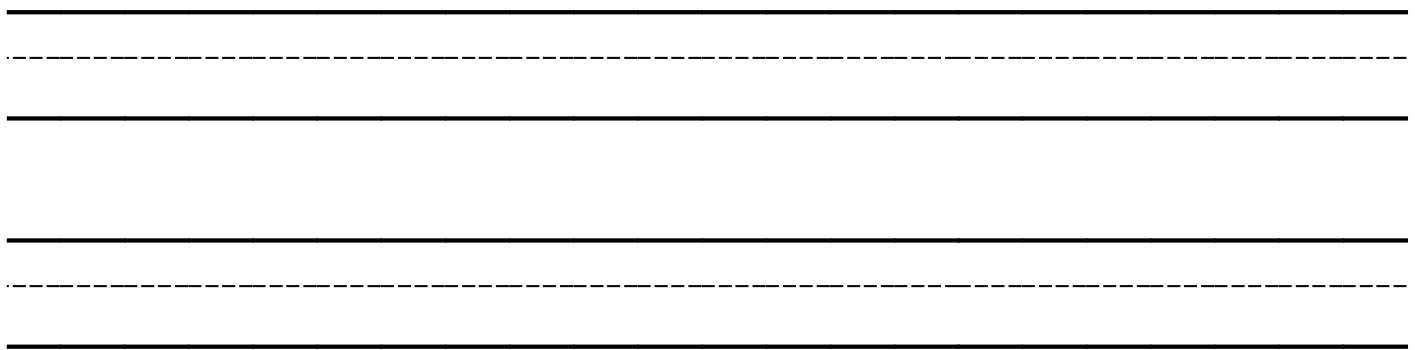
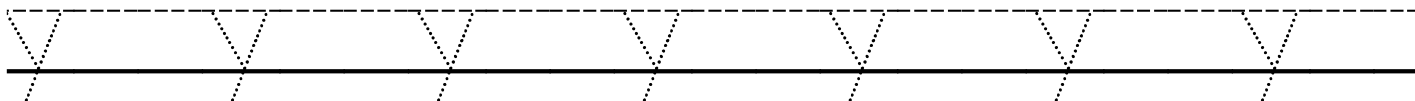
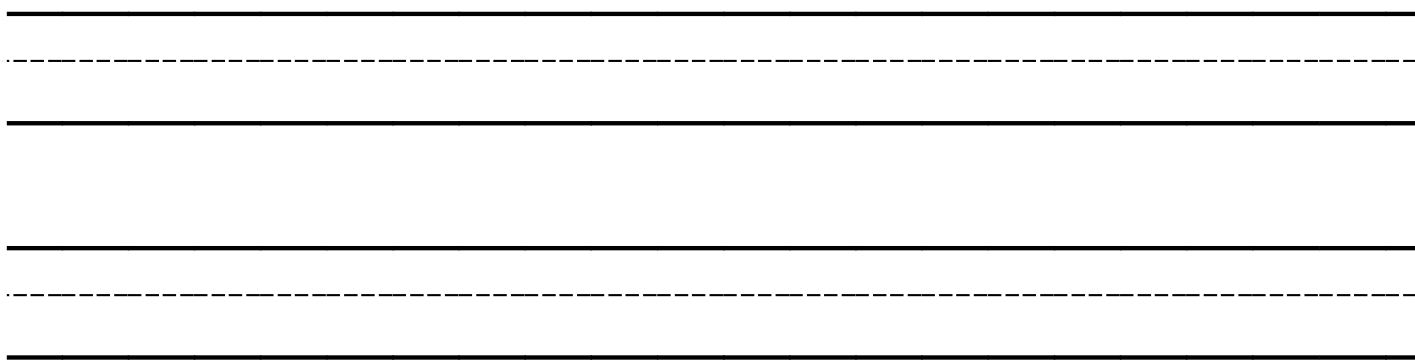
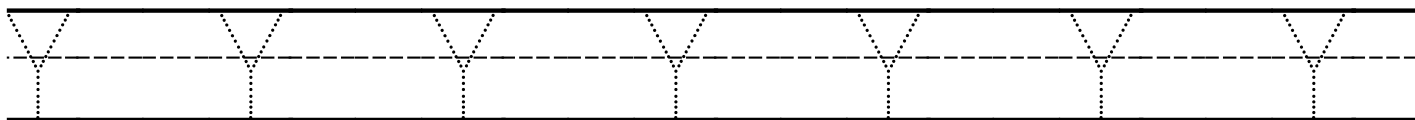
Three sets of empty three-line grids (top solid, middle dashed, bottom solid) for independent handwriting practice.

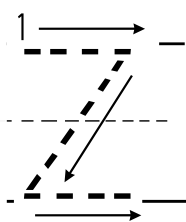


Three sets of empty three-line grids (top solid, middle dashed, bottom solid) for independent handwriting practice.



is for **Yolk**





is for **Zebra**

